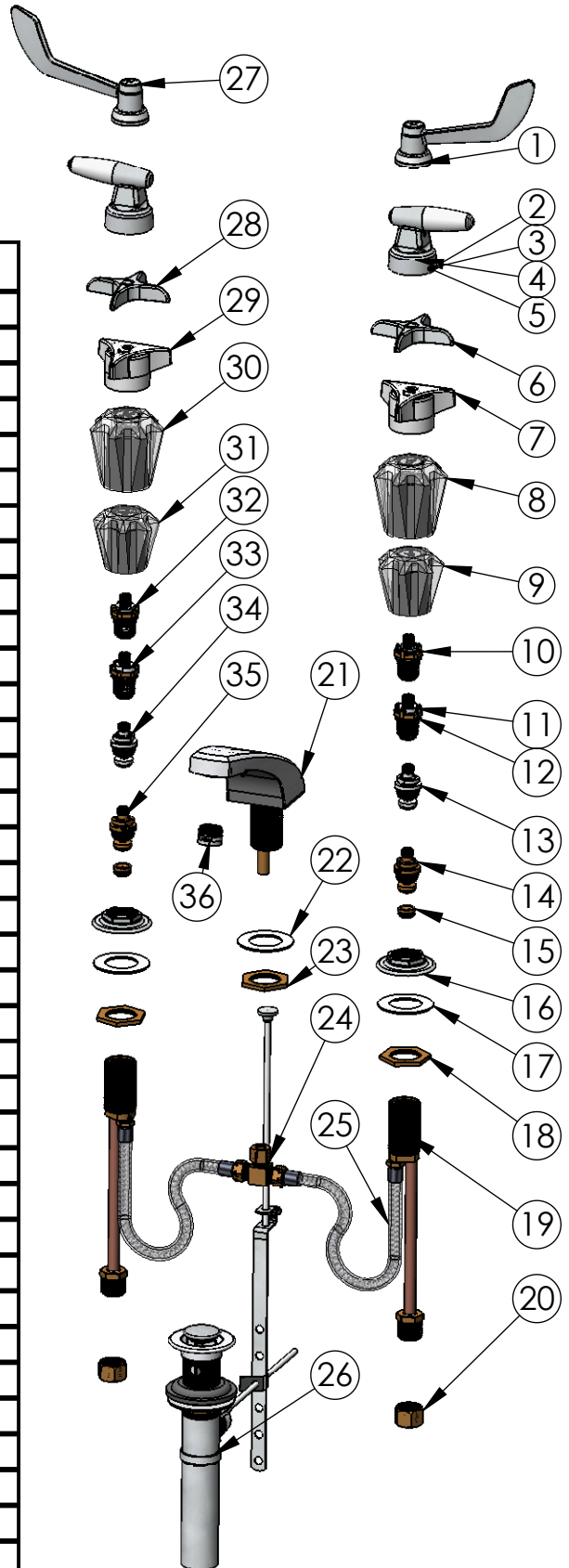




Note: Decorator and wrist blade handles get hot and cold valves, all others come with two hot valves.

## 900 Series Parts and Description

Item #	Part #	Description
1	88185	Wrist Blade Handle Ass'y - Cold
2	86635	Decorator Handle - Porcelain Insert
3	86619	Decorator Handle - Oak Insert
4	86622	Decorator Handle - Crystal Insert
5	86645	Decorator Handle - Chrome Insert
6	80308	Cross Handle Assembly -Cold
7	80380	Cold Metal Handle Assembly
8	80398	Large Cold Acrylic Handle Ass'y
9	80388	Cold Acrylic handle Assembly
10	80090	Cold -Industrial 1/4 Turn Valve
11	80079	Hot-1/4 Turn Valve
12	80080	Cold-1/4 Turn Valve
13	88537	Hot -Chrome Compression Valve
14	80037	Hot -Compression Valve
15	12601	Spread Lav Renewable Seat
16	11208	Round Escutcheon Lock Nut
17	13707	Gray Fibre Washer
18	11809	Lock Nut
19	88255	Valve Body Assembly
20	11801	Coupling Nut
21	88224	Chrome Spout Assembly w/Aerator
22	13707	Gray Fibre Washer
23	11809	Lock Nut
24	15235	Tee Assembly
25	13642	Flex Hose Assembly
26	9004-2	Pop-Up Assembly
27	88184	Wrist Blade Handle Ass'y - Hot
28	80307	Cross Handle Assembly -Hot
29	80379	Hot Metal Handle Assembly
30	80397	Large Hot Acrylic Handle Ass'y
31	80387	Hot Acrylic handle Assembly
32	80089	Hot -Industrial 1/4 Turn Valve
33	80079	Hot-1/4 Turn Valve
34	88537	Hot -Chrome Compression Valve
35	80037	Hot -Compression Valve
36	10711	13/16-27 Male Aerator



**UNION BRASS MANUFACTURING COMPANY**

2955 Lone Oak Circle, Eagan, MN 55121

Phone (651) 454-8858 Fax (651) 454-1228

WWW.UNIONBRASS.COM