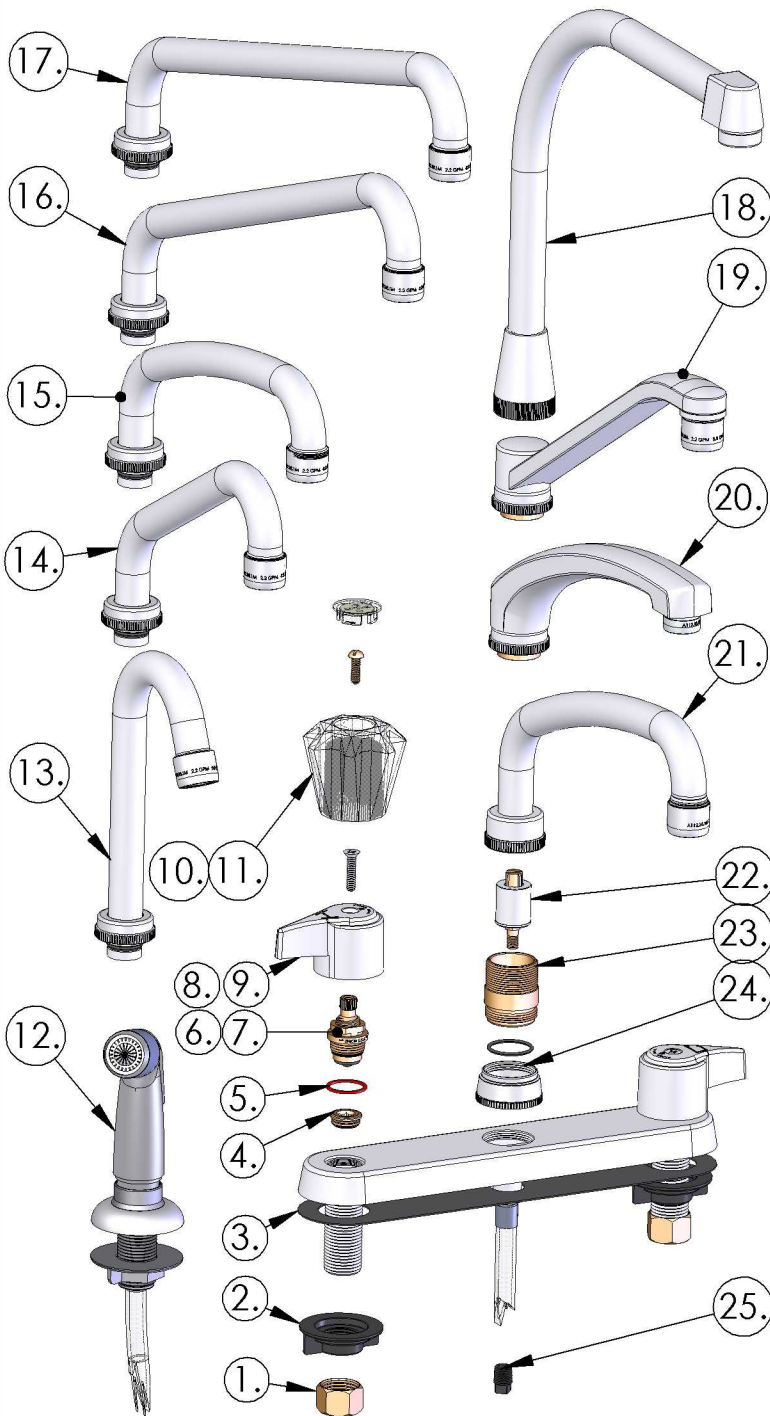


# UNION BRASS®



MANUFACTURING COMPANY



## 380 Series Parts List - Compression

Item	Part #	Description
1	11801	Coupling Nut
2	15208	Lock Nut
3	14023	Putty Gasket
4	12639	Seat
5	13717	Fibre Washer
6	80037	Washer Type Stem Ass'y - Hot
7	80038	Washer Type Stem Ass'y - Cold
8	80381	Blade Handle Ass'y - Hot
9	80382	Blade Handle Ass'y - Cold
10	80387	Acrylic Handle Ass'y - Hot
11	80388	Acrylic Handle Ass'y - Cold
12	13002	Spray Hose Assembly
13	88180	Gooseneck Spout Assembly
14	88548	6" Tube Spout Ass'y
15	80063	8" Spout Ass'y (less spray)
16	88553	12" Tube Spout Ass'y
17	88554	14" Tube Spout Ass'y
18	88514	Hi-Rise Spout Ass'y
19	88118	D-Spout Ass'y
20	80135	Cast Spout Ass'y
21	80164	8" Spout Ass'y (with spray)
22	10403	Diverter Valve Ass'y
23	10637	Spout Adapter Fitting
24	11894	Hold Down Nut
25	12101	Plug

For more information contact:

**UNION BRASS MANUFACTURING COMPANY**

2955 Lone Oak Circle, Eagan, MN 55121

Phone (651) 454-8858 Fax (651) 454-1228

WWW.UNIONBRASS.COM