

# 239 & 739 Series



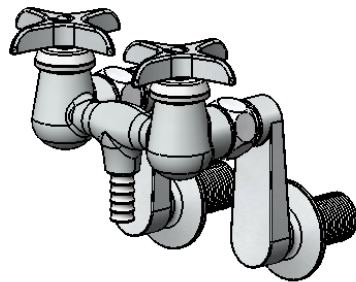
Model	Description
239-E	Compression Valves Cross Handles 2" Eccentric Flange
239-EA	Compression Valves Acrylic Handles 2" Eccentric Flange
239-F	Compression Valves Cross Handles 2" Female Flange
239-FA	Compression Valves Acrylic Handles 2" Female Flange
239-J	Compression Valves Cross Handles 4" Eccentric Flange
239-JA	Compression Valves Acrylic Handles 4" Eccentric Flange
239-M	Compression Valves Cross Handles 2" Male Flange
239-MA	Compression Valves Acrylic Handles 2" Male Flange
739-E	1/4 Turn Valves Cross Handles 2" Eccentric Flange
739-EA	1/4 Turn Valves Acrylic Handles 2" Eccentric Flange
739-F	1/4 Turn Valves Cross Handles 2" Female Flange
739-FA	1/4 Turn Valves Acrylic Handles 2" Female Flange
739-J	1/4 Turn Valves Cross Handles 4" Eccentric Flange
739-JA	1/4 Turn Valves Acrylic Handles 4" Eccentric Flange
739-M	1/4 Turn Valves Cross Handles 2" Male Flange
739-MA	1/4 Turn Valves Acrylic Handles 2" Male Flange

Cast Brass Body with 3 & 3/8" Centers on supplies

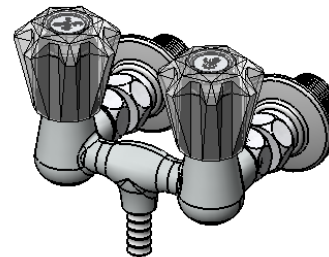
Chrome Plated Assembly

Cross or Acrylic handle Options.

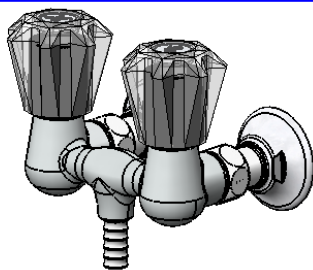
1/2 - 14 NPT Male and Female Supply Fittings



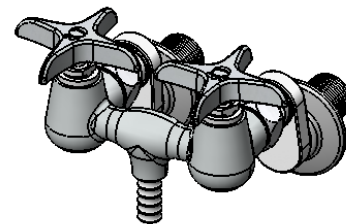
739-J



239-FA



739-MA



739-E

## American Craftsmanship Since 1892

When Ordering Specify Complete Model Number