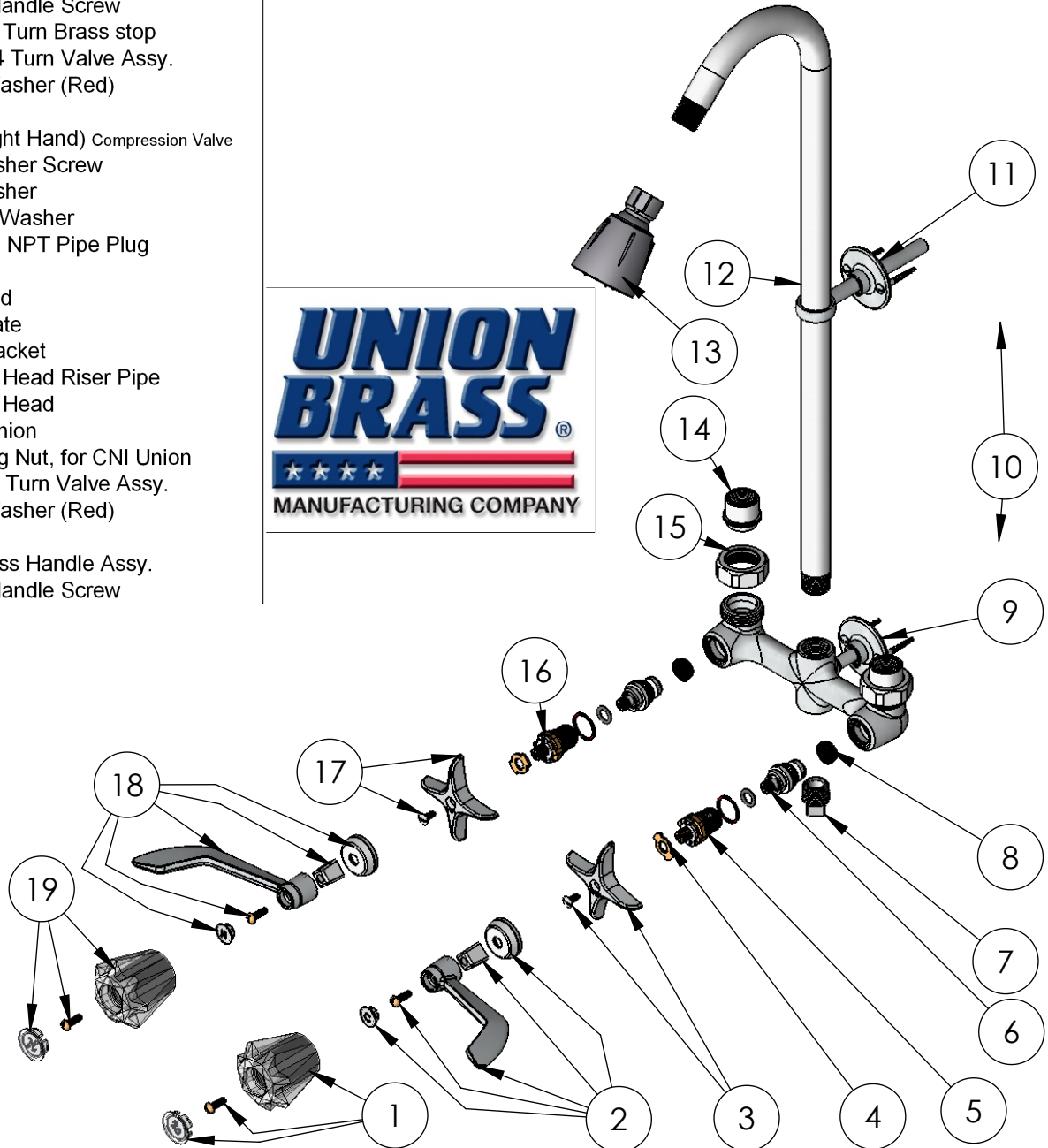


Model 638 6" Exposed Shower.

Item	Part#	Description	Item	Part#	Description
1	80388	Cold Acrylic Handle Assy.	18	88184	Hot Wrist Blade Handle Assy.
	12470	Acrylic Handle Screw		15061	Cap
	80878	Cold Acrylic Handle Cap		12470	Wrist Handle Screw
2	88185	Cold Wrist Blade Handle Assy.		15102	Wrist Handle
	15062	Cold Cap		15110	Handle Insert
	12470	Wrist Handle Screw	19	80387	Hot Acrylic Handle Assy.
	15102	Wrist Handle		12470	Acrylic Handle Screw
	15110	Handle Insert		80877	Hot Acrylic Handle Cap
3	80308	Cold Cross Handle Assy.			
	12461	Cross Handle Screw			
4	10894	Quarter Turn Brass stop			
5	80090	Cold 1/4 Turn Valve Assy.			
	13717	Fiber Washer (Red)			
	12274	O-Ring			
6	88537	Hot (Right Hand) Compression Valve			
	12404	Bib Washer Screw			
	13801	Bib Washer			
	13717	Bonnet Washer			
7	12105	1/2 Inch NPT Pipe Plug			
8	12639	Seat			
9	82326	Wall Rod			
10	86327	Wall Plate			
11	82325	Wall Bracket			
12	80755	Shower Head Riser Pipe			
13	12825	Shower Head			
14	13506	C-N-I Union			
15	11836	Coupling Nut, for CNI Union			
16	80089	Hot 1/4 Turn Valve Assy.			
	13717	Fiber Washer (Red)			
	12274	O-Ring			
17	80307	Hot Cross Handle Assy.			
	12461	Cross Handle Screw			



For more information contact:

UNION BRASS MANUFACTURING COMPANY

2955 Lone Oak Circle, Eagan, MN 55121

Phone (651) 454-8858 Fax (651) 454-1228

WWW.UNIONBRASS.COM