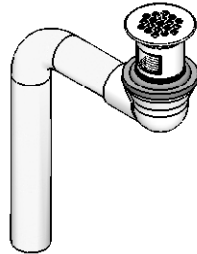
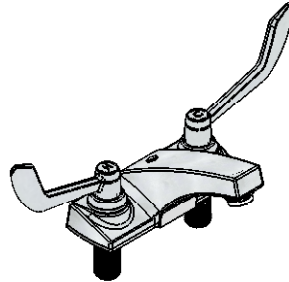


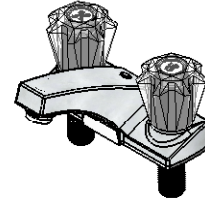
4377-O



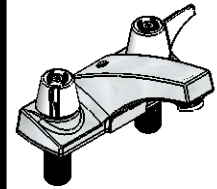
# 270 & 370 Series Shell Lavatory



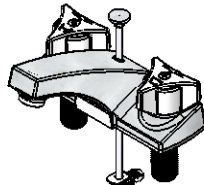
375A-W



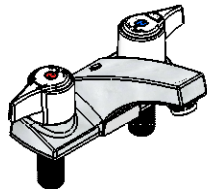
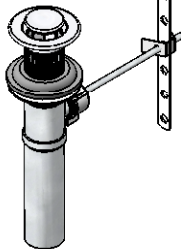
378A



274A



270A



375C-V



Model	Description
180	Industrial 1/4 Turn Valves, Wrist Handles, Grid Strainer
181	Industrial 1/4 Turn Valves, Wrist Handles, No Drain
270A	Compression Valves, Metal Handles, With Pop-up
271A	Compression Valves, Metal Handles, No Drain
273A	Compression Valves, Wing Handles, With Pop-up
274A	Compression Valves, Wing Handles, No Drain
278A	Compression Valves, Clear Acrylic Handles, No Drain
279A	Compression Valves, Clear Acrylic Handles, With Pop-Up
370A	1/4 Turn Valves, Chrome Metal Handles, With Pop-up
371A	1/4 Turn Valves, Chrome Metal Handles, No Drain
375A	1/4 Turn Valves, Blade Handles, No Drain
375B	1/4 Turn Valves, Blade Handles, With Pop-up
375C	1/4 Turn Valves, Blade Handles, With Grid Strainer
375A-V	1/4 Turn Valves, Blade Handles, Vandal Resistant, No Drain
375B-V	1/4 Turn Valves, Blade Handles, Vandal Resistant, W/Pop-up
375C-V	1/4 Turn, Blade Handles, Vandal Resistant, W/Grid Strainer
375A-W	Industrial 1/4 Turn Valves, Hospital Handles, No Drain
375B-W	Industrial 1/4 Turn Valves, Hospital Handles, With Pop-up
375C-W	Industrial 1/4 Turn Valves, Hospital Handles, W/Grid Strainer
378A	1/4 Turn Valves, Clear Acrylic Handles, No Drain
379A	1/4 Turn Valves, Clear Acrylic Handles, With Pop-Up
4375	1/4 Turn Valves, Chrome Insert Decorator Handle - No Drain
4376	1/4 Turn Valves, Porcelain Insert Decorator Handle - No Drain
4377	1/4 Turn Valves, Oak Insert Decorator Handle - No Drain
4377-G	1/4 Turn Valves, Oak Insert Decorator Handle -Grid Strainer
4377-O	1/4 Turn Valves, Oak Decorator Handle -Offset Grid Strainer
4378	1/4 Turn Valves, Crystal Insert Decorator Handle - No Drain

If you wish to change drains add a (-O for offset grid) (-G for grid drain) (-B for Bar sink drain )

**American Craftsmanship Since 1892**

When Ordering Specify Complete Model Number